

Wyomissing Area School District Data Overview



April 11, 2022

Curriculum Committee

Dr. Melissa Woodard



AGENDA

- Historical Data
- Growth Data - 2021-2022
 - Overview Classroom Diagnostic Tests
 - Overview Fountas and Pinnell Levels (grades K-4)
 - Overview of Lexile Levels (grades 5-8)
- Data Overview from New Roles
- Comprehensive Plan Update
 - Mission, Vision and Values
 - Goal Areas

PSSA Overview Grade 3 Math

**Percentages in presentation may not equate to 100 due to rounding.

Year	# of Students	Adv	Pro	Basic	Below
2020-2021	134	25%	33%	19%	25%
2019-2020					
2018-2019	138	29%	30%	32%	9%
2017-2018	135	30%	40%	24%	6%
2016-2017	145	23%	37%	21%	19%

PSSA Overview Grade 3 ELA

Year	# of students	Advanced	Proficient	Basic	Below Basic
2020-2021	135 students	17% (23)	52% (70)	25% (34)	6% (8)
2019-2020					
2018-2019	138 students	22% (30)	53% (73)	21% (29)	4% (6)
2017-2018	132 students	21% (28)	54% (71)	21% (28)	4% (5)
2016-2017	145 students	18% (26)	55% (80)	24% (35)	3% (4)

PSSA Overview Grade 5 Math

	# of students	Advanced	Proficient	Basic	Below Basic
2020-2021	121 students	13% (15)	31% (38)	31% (38)	25% (30)
2019-2020					
2018-2019	147 students	22% (32)	35% (52)	29% (43)	14% (20)
2017-2018	134 students	25% (33)	29% (39)	25% (34)	21% (28)
2016-2017	133 students	23% (30)	33% (44)	29% (39)	15% (20)

PSSA Overview Grade 5 ELA

	# of students	Advanced	Proficient	Basic	Below Basic
2020-2021	132 students	14% (19)	48% (63)	34% (45)	4% (5)
2019-2020					
2018-2019	148 students	26% (39)	50% (74)	24% (35)	<1% (1)
2017-2018	133 students	25% (33)	48% (64)	26% (35)	<1% (1)
2016-2017	131 students	34% (44)	44% (58)	19% (25)	3% (4)

PSSA Overview Grade 7 Math

	# of students	Advanced	Proficient	Basic	Below Basic
2020-2021	128 students	9% (11)	13% (16)	40% (51)	39% (50)
2019-2020					
2018-2019	128 students	27% (34)	26% (33)	21% (27)	27% (34)
2017-2018	132 students	30% (41)	33% (43)	13% (17)	23% (31)
2016-2017	146 students	21% (31)	23% (33)	27% (40)	29% (42)

PSSA Overview Grade 7 ELA

	# of students	Advanced	Proficient	Basic	Below Basic
2020-2021	127 students	12% (15)	47% (60)	39% (50)	2% (2)
2019-2020					
2018-2019	129 students	31% (40)	43% (56)	26% (33)	0% (0)
2017-2018	132 students	35% (46)	48% (63)	17% (23)	0% (0)
2016-2017	146 students	31% (45)	40% (58)	27% (39)	3% (4)

Data - Classroom Diagnostic Tests



Grade 3 Math CDT Data

August	Numbers & Operations	November	Numbers & Operations	March	Algebraic Concepts	Goal 822
	2 Students		0 Students		21 Students	
6 students	4 Students	23 students	23 Students	61 students	40 Students	
111 students	4 Students	90 students	7 Students	43 students	4 Students	800's
	17 Students		39 Students		20 Students	700's
	39 Students		24 Students		14 Students	600's
	29 Students		12 Students		3 Students	500's
	19 Students		8 Students		1 Student	400's
	3 Students		0 Students		1 Student	300's or <
	4 Students		10 Students		21 Students	Did Not Take
	121 TOTAL		123 TOTAL		125 TOTAL	

Grade 3 ELA CDT Data

September	CDT Craft and Structure	January	Craft and Structure	September	CDT Key Ideas	January	CDT Key Ideas	Goal 741
	9 Students		11 Students		11 Students		11 Students	
50 students	41 Students	52 students	41 Students	37 students	26 Students	44 students	33 Students	
	10 Students		14 Students		9 Students		15 Students	700's
	31 Students		17 Students		33 Students		27 Students	600's
	14 Students		11 Students		20 Students		11 Students	500's
	4 Students		5 Students		10 Students		3 Students	400's
61 Students	2 Students	51 Students	4 Students	74 Students	2 Students	59 Students	3 Students	300's<
	13 Students		23 Students		13 Students		23 Students	Did Not Take
	124 TOTAL		126 TOTAL		124 TOTAL		126 Total	

Grade 5 Math CDT Data

September	Numbers & Operations	November	Nub & Op	February	Numbers & Operations	Goal 958
	1 Student		3 Students		10 Students	
13 students	12 Students	32 students	29 Students	51 students	41 Students	
	22 Students		21 Students		20 Students	900's
	34 Students		32 Students		33 Students	800's
	24 Students		18 Students		19 Students	700's
	15 Students		8 Students		8 Students	600's
	7 Students		5 Students	84 Students	4 Students	500's
106 Students	4 Students	89 Students	5 Students			400's
	23 Students		20 Students		8 Students	Did Not Take
	142 TOTAL		141 TOTAL		143 TOTAL	

Grade 5 ELA CDT Data

September	CDT Craft and Structure	February	Craft and Structure	September	CDT Key Ideas	February	Key Ideas	Goal 890
	12 Students		21 Students		12 Students		16 Students	
69 Students	57 Students	87 Students	66 Students	76 Students	64 Students	84 Students	68 Students	
	30 Students		21 Students		17 Students		24 Students	800's
	13 Students		19 Students		19 Students		14 Students	700's
	5 Students		7 Students		6 Students		12 Students	600's
49 Students	1 Student		2 Students		1 Student		1 Student	500's
		51 Students	2 Students	43 Students	0 Students	54 Students	3 Students	400's
	28 Students		8 Students		28 Students		8 Students	Did Not Take
	146 TOTAL		146 TOTAL		147 TOTAL		146 TOTAL	



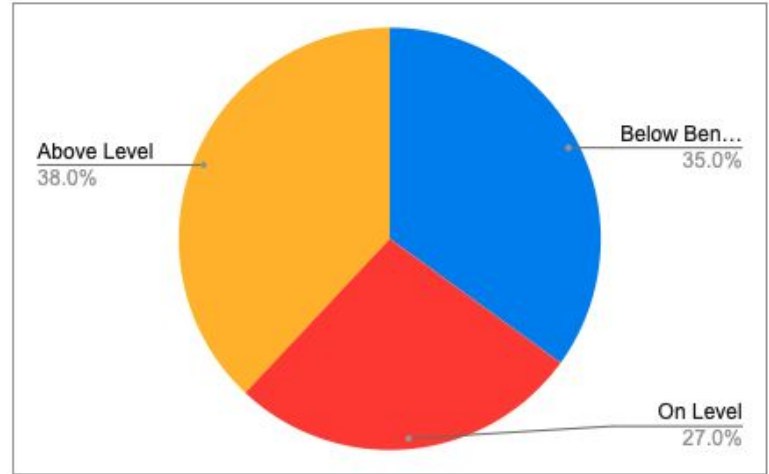
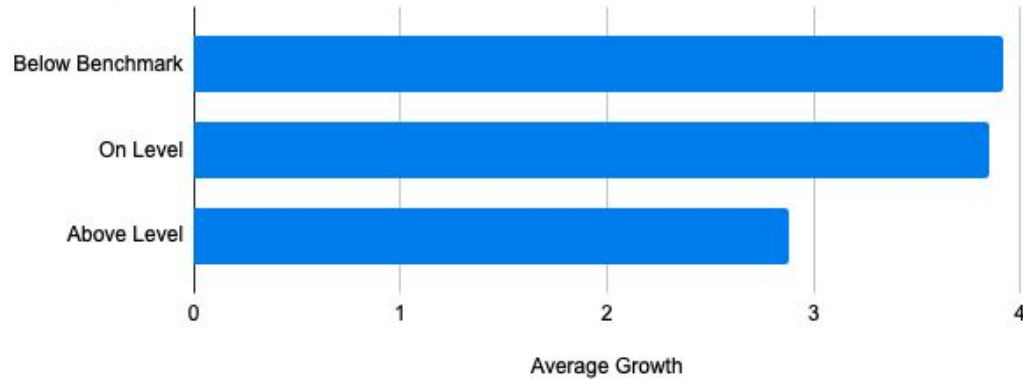
**Fountas and Pinnell Reading Level
Data (Grades 1-4)**

Grade 1 - Fountas and Pinnell Data

	Average Growth	Grade 1st
Below Benchmark	3.92	41
On Level	3.85	14
Above Level	2.88	45

	Trimester II
Below Benchmark	35
On Level	27
Above Level	38

Average Growth

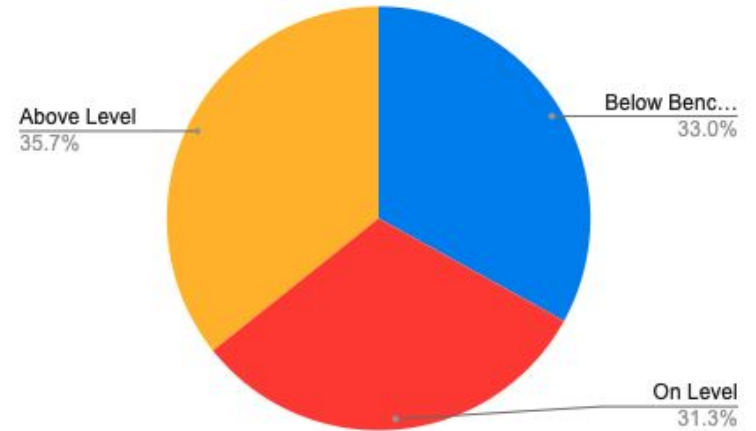
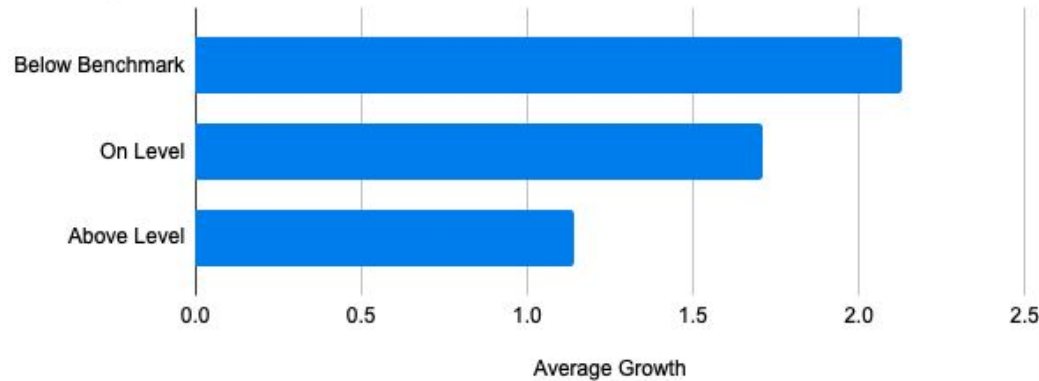


Grade 3 - Fountas and Pinnell Data

	Average Growth	Grade 3rd
Below Benchmark	2.13	29
On Level	1.71	35
Above Level	1.14	48

	Trimester II
Below Benchmark	37
On Level	35
Above Level	40

Average Growth



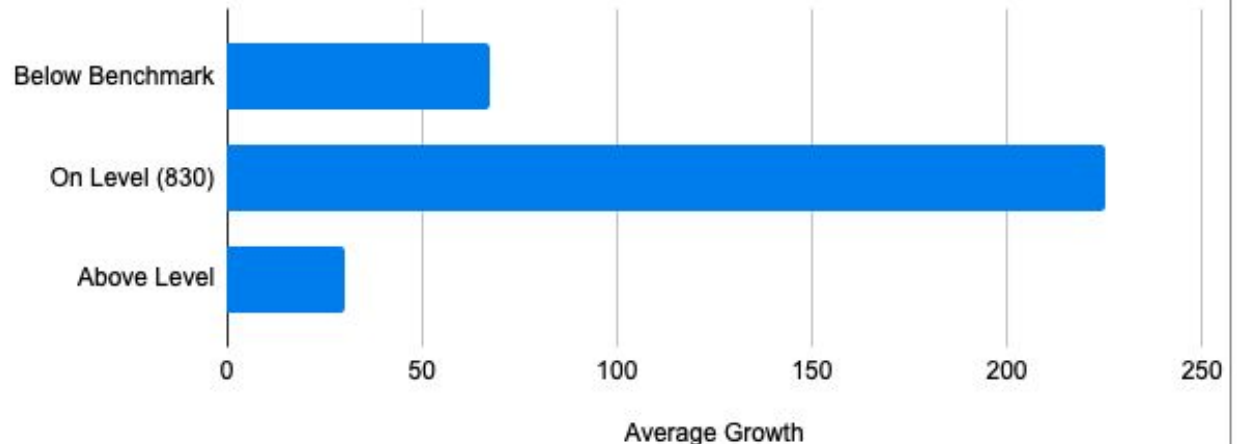


**SRI Lexile Reading Levels
Grades 5-8**

SRI Lexile Levels - Grade 5

	Average Growth	Grade 5th
Below Benchmark	67.31	66
On Level (830)	225	1
Above Level	30.17	56

Average Growth

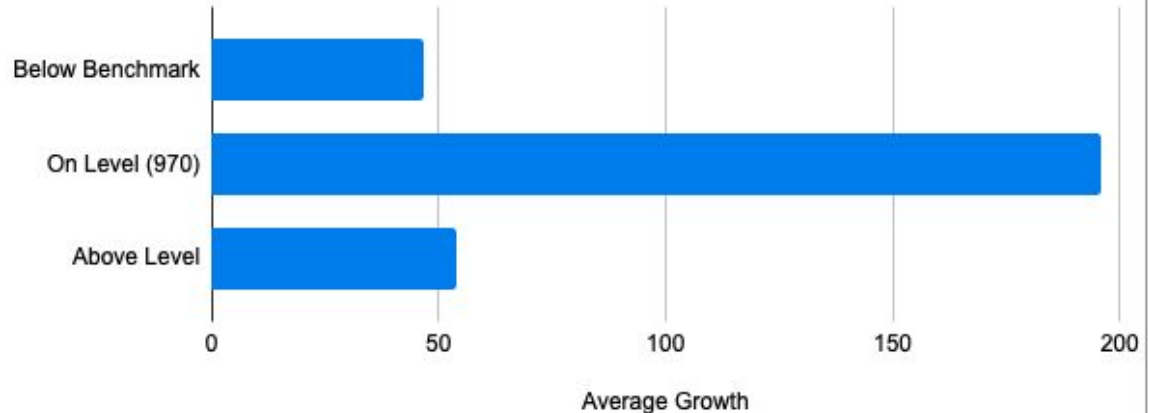


SRI Lexile Levels - Grade 7



	Average Growth	Grade 7th
Below Benchmark	46.8	52
On Level (970)	196	1
Above Level	54.07	61

Average Growth





WHEC Math Intervention Data

Grade 4 Math Intervention Data

Student	September 2021 score	November 2021 score	March 2022 score	Statistically significant growth Nov to March?	EOY goal - 910
A	745	653	573	no	
B	617	648	604	no	score increased
C	394	681	630	no	score decreased
D	543	658	639	no	statistically significant growth
E	543	459	665	yes	released from group
F	718	696	697	no	
G	761	672	699	no	
H	588	562	716	yes	
I	657	644	731	no	
J	672	680	778	no	
K	556	648	789	yes	
L	612	688	809	no	
M	387	682	821	yes	
N	625	627	844	yes	
O	586	504	942	yes	***release after spring break
P	530	773	released in Jan.		
Q	645	812	released in Jan.		
R	626	844	released in Jan.		
S	582	483			No longer in district



**WREC ELA Intervention Data
(SRI Lexile Levels)**

Grade 6

	AUG	NOV	JAN/FEB	MAR	MAY	KEY
A	672	605	722			<729
B	722	851				730 - 924
C	719	825	898			925 - 1070
D	567	666	757			1071 - 1700+
E	623	640	696			
F	750	840				
G	616	809				
H	663	767	881			
I	888	804				
J	788	763	764			
K	945	943				
L	643	785	786			
M	843		882			
N	813		991			
O	897		899			



JSHS ELA Intervention Data

Grade 7

	AUG	NOV	JAN/FEB	MAR	MAY	KEY
A	474	512	504	527		<769
B	591	594	602	606		770 - 969
C	416	696				970 - 1120
D	581	644	658	604		1121 - 1700+
E	354	511	536	571		
F	618	707				
G	542	599	649	634		
H	619	655				
I		508	302	355		
J	625		748			
K		750		948		
L		756	842			
M			763	781		
N			467	519		



Comprehensive Planning Updates

Mission and Vision

OUR MISSION

Inspiring Excellence, One Spartan at a Time!

OUR VISION - *suggested revision*

The Wyomissing Area School District aspires to:

- Prepare students to excel in their global community;
- Offer rigorous academics and enriching extracurricular opportunities;
- Provide innovative opportunities to support all learners;
- Attract and retain educators of impact; and
- Create a culture that fosters strong relationships, dignity and growth.

Comprehensive Plan - Goal Areas

1. Increase K-12 math achievement
2. Continued focus on increasing literacy achievement, specifically among subgroups
3. Create relevant and meaningful learning opportunities for all K-12 students
4. Implement the use of differentiation to meet needs of individual learners in Tier I classrooms
5. Develop a structure of MTSS/RtII supports across the K-12 system